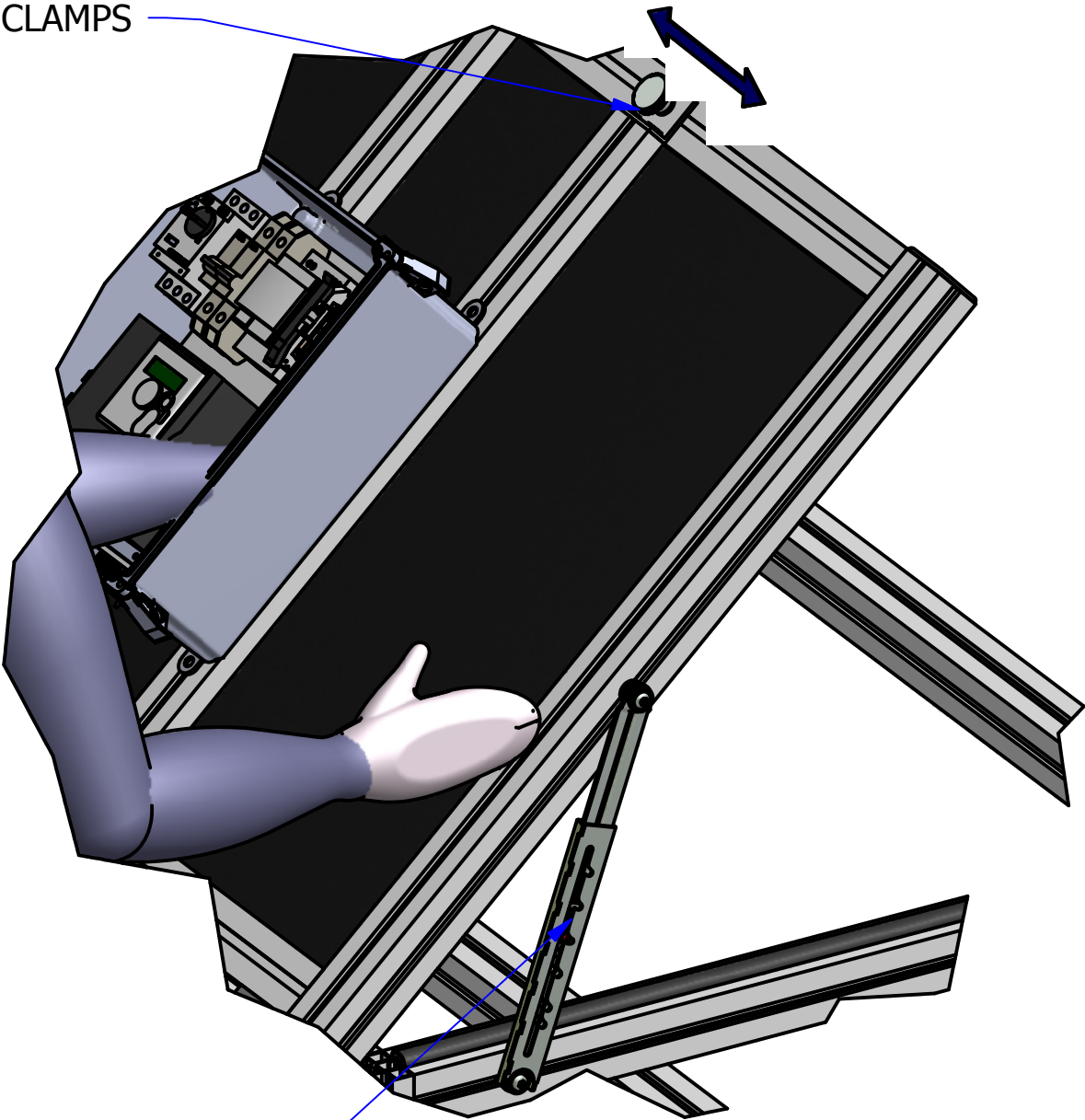
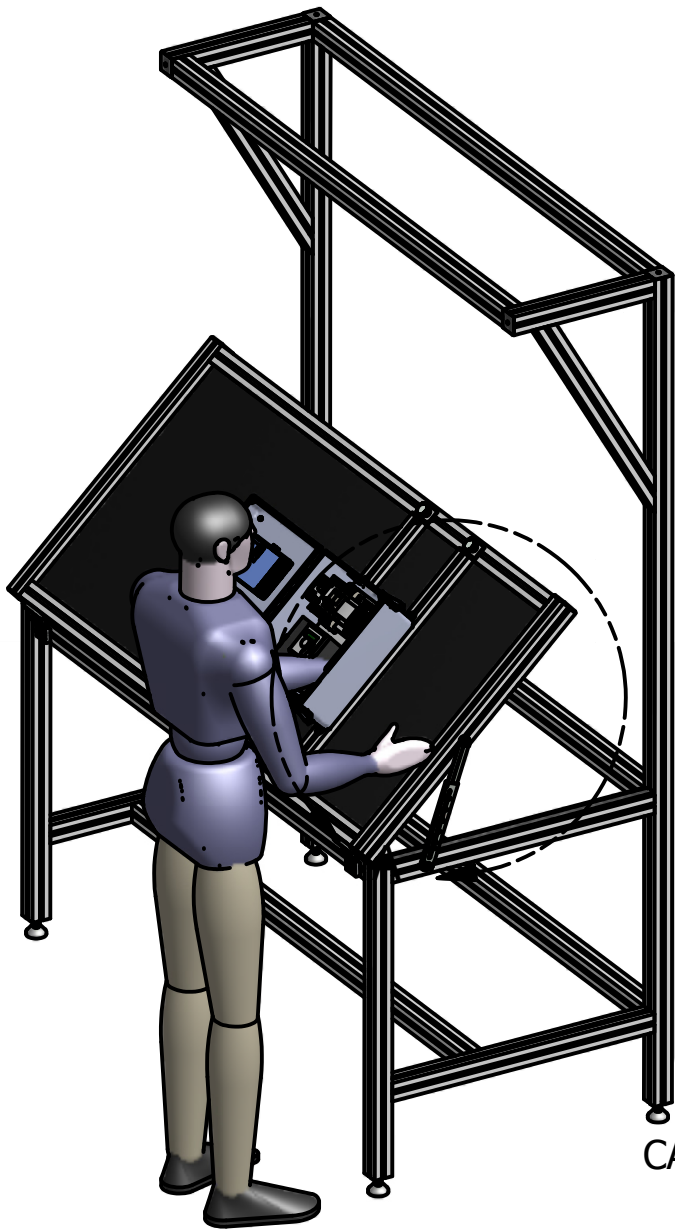


ADJUSTABLE CLAMPS

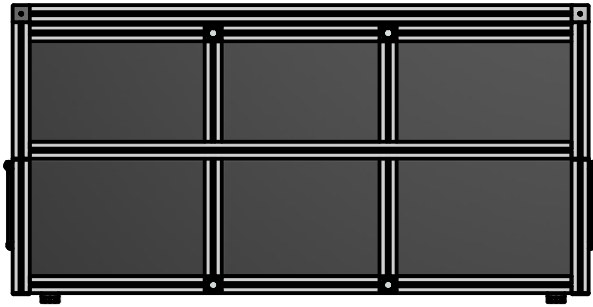


CAM STAY ALLOWS FOR 6 POSITION TILTING

DRAWING APPROVED FOR PRODUCTION BY: \_\_\_\_\_ DATE \_\_\_\_\_ APPROVED  REVISE & RESUBMIT   
 \_\_\_\_\_ APPROVED WITH CHANGES  REJECTED

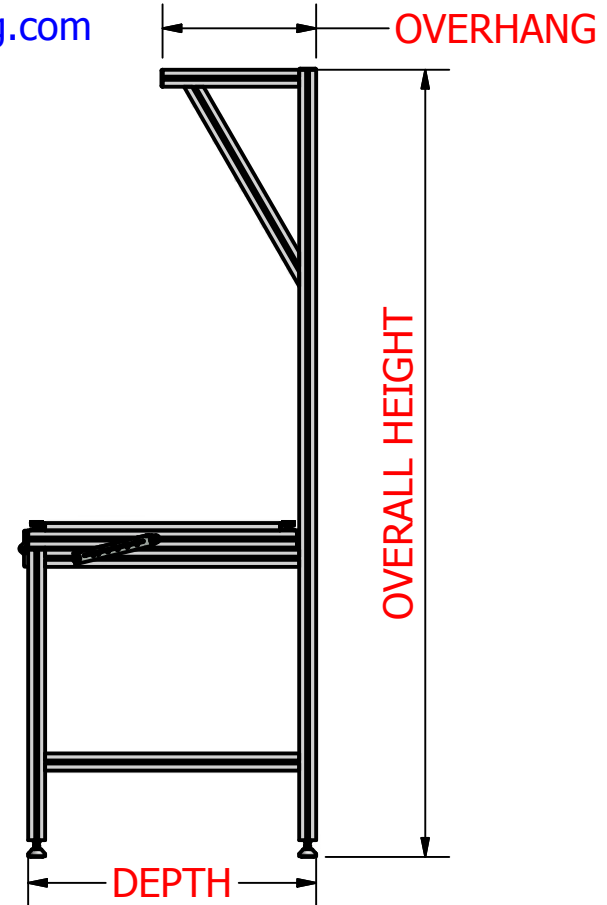
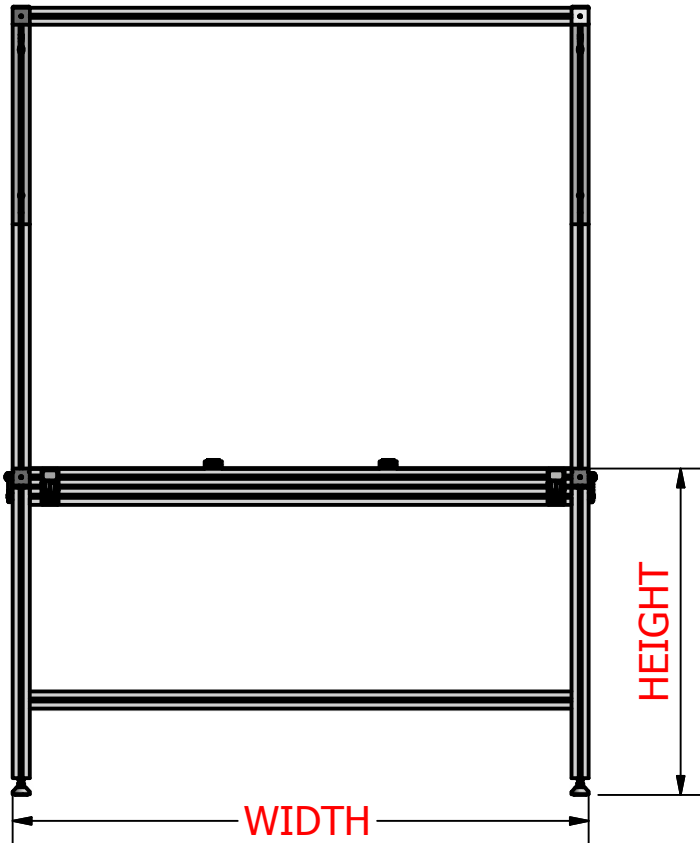
PROJECT SP082916 WORKSTATION TILTING TOP				WWW.MINITECFRAMING.COM	
DRAWN BY ANDY MOLES				VICTOR, NY	
DATE 8/29/2016		PH # 585 924-4690		DIRECT 585 398-1240 EXT 104	
DRAWN FOR MINITEC'S CUSTOMER		DWG NO SP082916		REV	
TOLERANCES UNLESS OTHERWISE NOTED .X +/- .1/32" .XX +/- .015" .XXX +/- .010"		MATERIAL		FINISH	
				SHEET 1 OF 3	

SPECIFY FOLLOWING FOR A FREE QUOTE TODAY



HEIGHT =  
 OVERALL HEIGHT =  
 WIDTH =  
 DEPTH =  
 OVERHANG =

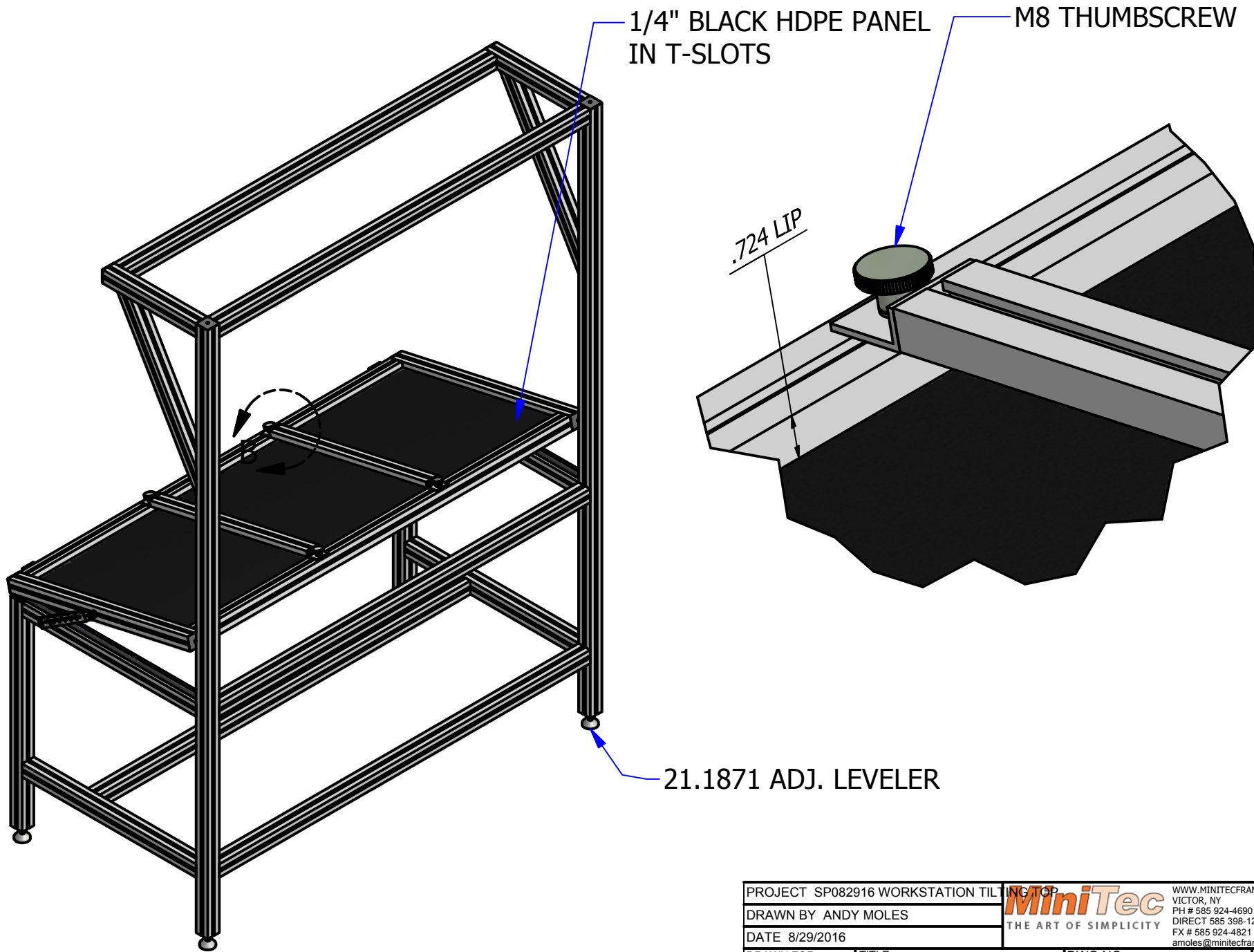
SEND TO: sales@minitecframing.com



APPROVAL INITIALS:  
 \_\_\_\_\_

PRE-MILL INSPECTION  
 PROFILE \_\_\_ MITER ANGLE \_\_\_  
 LENGTH \_\_\_ MITER DIR. \_\_\_

PROJECT SP082916 WORKSTATION TILTING TOP			WWW.MINITECFRAMING.COM	
DRAWN BY ANDY MOLES			VICTOR, NY	
DATE 8/29/2016			PH # 585 924-4690	
DRAWN FOR MINITEC'S CUSTOMER		TITLE WORKSTATION TILTING TOP	DWG NO SP082916	REV
TOLERANCES UNLESS OTHERWISE NOTED X +/- .125" .XX +/- .015" .XXX +/- .010"		MATERIAL		SHEET 2 OF 3
		FINISH		



DRAWING APPROVED FOR PRODUCTION BY: \_\_\_\_\_ DATE \_\_\_\_\_ APPROVED  REVISE & RESUBMIT

APPROVED WITH CHANGES  REJECTED

PROJECT SP082916 WORKSTATION TILTING TOP				WWW.MINITECFRAMING.COM	
DRAWN BY ANDY MOLES				VICTOR, NY	
DATE 8/29/2016		PH # 585 924-4690		DIRECT 585 398-1240 EXT 104	
DRAWN FOR MINITEC'S CUSTOMER		FX # 585 924-4821		amoles@minitecframing.com	
TOLERANCES UNLESS OTHERWISE NOTED X +/- .125" .XX +/- .015" .XXX +/- .010"		MATERIAL		FINISH	
TITLE WORKSTATION TILTING TOP		DWG NO SP082916		REV	
				SHEET 3 OF 3	